

Providence R. I.
This plat accompanies
our report of this date.

PROVIDENCE, R. I.
CITY ENGINEER'S OFFICE
STREET LINE DEPT.
Feb. 18, 1889
014702

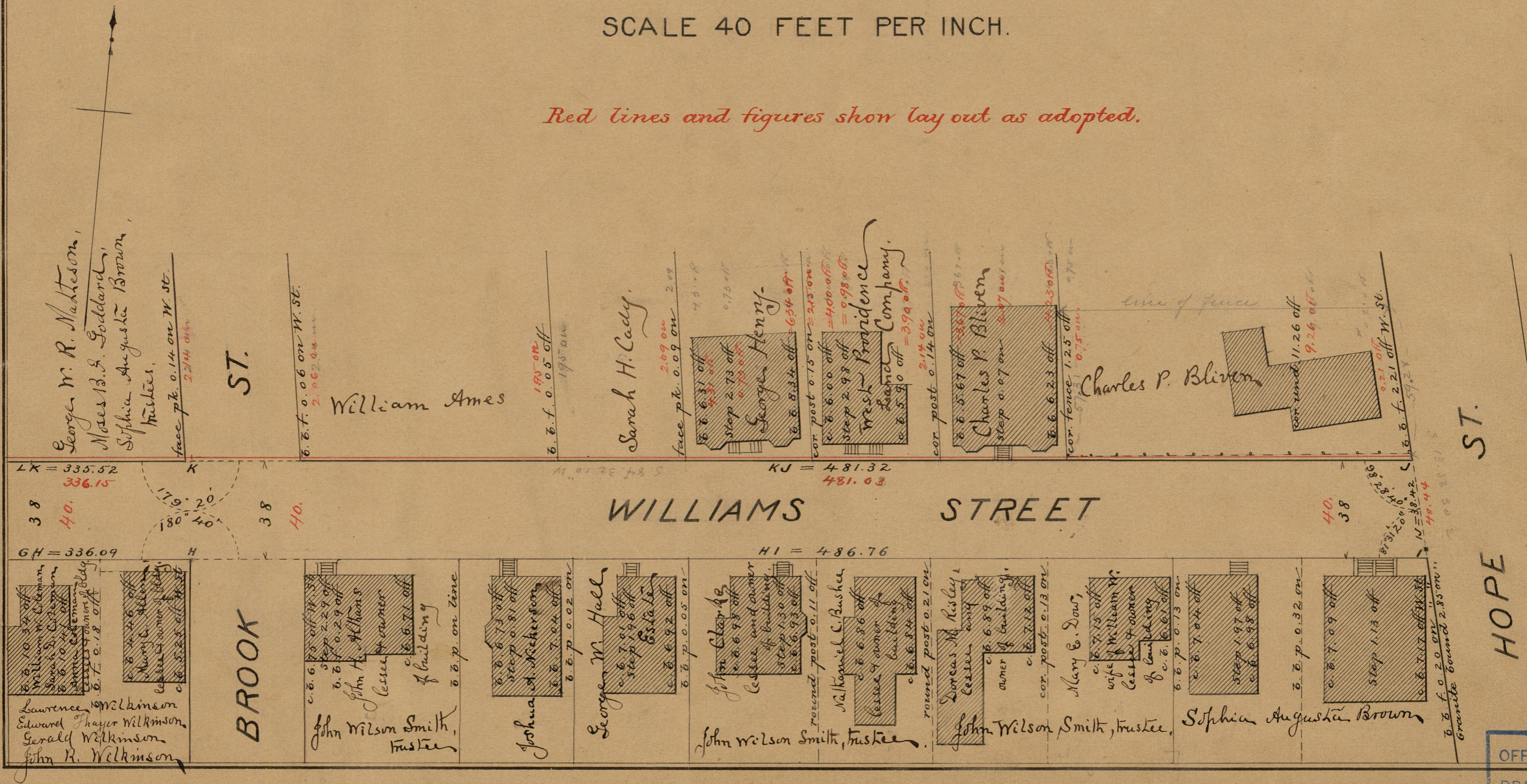
PLAT OF WILLIAMS STREET

FROM SOUTH MAIN ST. TO HOPE ST.

IN FOUR SHEETS

SCALE 40 FEET PER INCH.

Red lines and figures show lay out as adopted.



ST.

HOPE

OFFICE No.	9949
DRAWN	83
SHEET	B-66

Aug
7-16-93